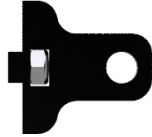
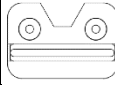

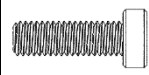


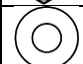



INSTALLATION INSTRUCTIONS

- 1) PREPARE THE MOUNTING ARMS FOR USE BY INSTALLING THE TWO INCLUDED **8-32 NUTS** IN THE SQUARE RECESSES TOWARDS THE REAR OF THE **MOUNTING ARMS**.



- 2) INSTALL BOTH **MOUNTING ARMS** ON TO YOUR TRANSDUCER USING THE HARDWARE INCLUDED WITH YOUR TRANSDUCER AND **ONE SIZE OF THE INCLUDED RUBBER WASHERS**. THESE WASHERS SHOULD GO BETWEEN THE TRANSDUCER AND THE INSIDE EDGE OF THE MOUNTING ARM TO PREVENT THE TRANSDUCER FROM SHIFTING UP OR DOWN.

PARTS LIST	
	1X MOUNTING PLATE
	2X MOUNTING ARMS
	2X M5 STAINLESS BOLTS
	2X 8-32 STAINLESS BOLTS
	2X 8-32 STAINLESS NUTS
	2X 1/4" RUBBER WASHERS
	2X SIZE 10 RUBBER WASHERS



- 3) INSTALL THE **MOUNTING ARMS** ONTO THE **MOUNTING PLATE** BY LOCATING THE SQUARE PIN ON THE BACK OF THE **MOUNTING ARMS** INTO THE RECTANGULAR TRACK ON THE **MOUNTING PLATE**. THE **MOUNTING ARM** ASSEMBLY SHOULD BE CENTERED ON THE PLATE UNLESS YOU NEED TO SHIFT THE TRANSDUCER LEFT OR RIGHT FOR CLEARANCE.
- 4) USING THE INCLUDED **8-32 BOLTS**, TIGHTEN THE TRANSDUCER/ARMS TO THE MOUNTING PLATE BY SCREWING THE BOLTS INTO THE CAPTIVE NUTS INSTALLED EARLIER.



- 5) MOUNT THE COMPLETE ASSEMBLY TO YOUR TRANSDUCER POD WITH THE INCLUDED **M5 BOLTS**.

- 6) GO FISH.