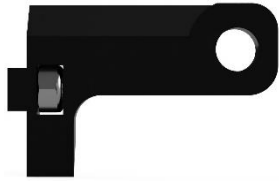


INSTALLATION INSTRUCTIONS

- 1) PREPARE THE MOUNTING ARMS FOR USE BY INSTALLING THE TWO INCLUDED 8-32 NUTS IN THE SQUARE RECESSES TOWARDS THE REAR OF THE MOUNTING ARMS.



- 2) INSTALL BOTH ARMS ON TO YOUR TRANSDUCER USING THE HARDWARE INCLUDED WITH YOUR TRANSDUCER AND ONE SIZE OF THE INCLUDED RUBBER WASHERS. THESE WASHERS SHOULD GO BETWEEN THE TRANSDUCER AND THE INSIDE EDGE OF THE MOUNTING ARM TO PREVENT THE TRANSDUCER FROM SHIFTING UP OR DOWN.

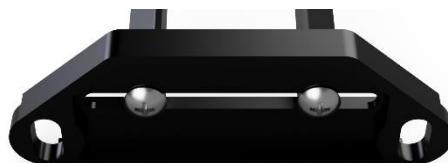
NOTE: THESE ARMS CAN BE MOUNTED TO THE TRANSDUCER FACING UP OR DOWN DEPENDING ON THE CLEARANCE FROM THE TOP OF THE TRANSDUCER TO THE TOP OF THE KAYAK. THE STANDARD CONFIGURATION IS WITH THE MOUNTING FLANGE FACING UP.




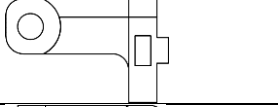
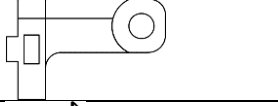





- 3) INSTALL THE TRANSDUCER/ARMS ONTO THE MOUNTING PLATE BY LOCATING THE SQUARE PIN ON THE BACK OF THE MOUNTING ARMS INTO THE RECTANGULAR TRACK ON THE MOUNTING PLATE. THE TRANSDUCER/ARMS ASSEMBLY SHOULD BE CENTERED ON THE PLATE UNLESS YOU NEED TO SHIFT THE TRANSDUCER LEFT OR RIGHT FOR CLEARANCE. **NOTE: THE PLATE CAN BE MOUNTED TO THE ARMS WITH THE FLAT SIDE FACING DOWN OR UP DEPENDING ON CLEARANCE NEEDS. THE STANDARD CONFIGURATION IS WITH THE FLAT SIDE FACING DOWN.**



- 4) USING THE INCLUDED 8-32 BOLTS, TIGHTEN THE TRANSDUCER/ARMS TO THE MOUNTING PLATE BY SCREWING THE BOLTS INTO THE CAPTIVE NUTS INSTALLED EARLIER.

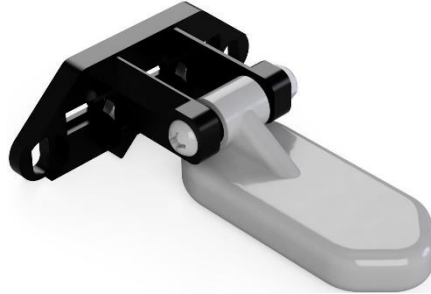


PARTS LIST

	1X MOUNTING PLATE
	1X LEFT MOUNTING ARM
	1X RIGHT MOUNTING ARM
	2X 8-32 STAINLESS BOLTS
	2X 8-32 STAINLESS NUTS
	2X 1/4" RUBBER WASHERS
	2X SIZE 10 RUBBER WASHERS
	2X SIZE 10 OVERSIZED WASHERS

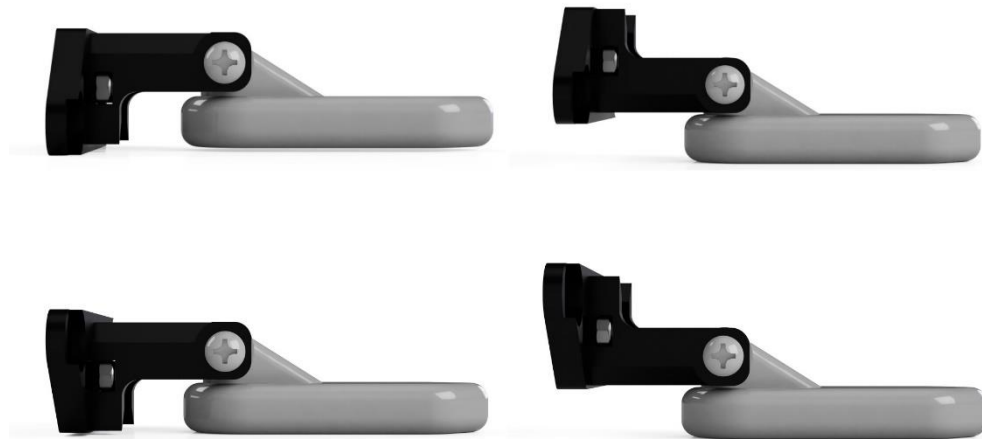
INSTALLATION INSTRUCTIONS

- 5) MOUNT THE COMPLETE ASSEMBLY TO YOUR KAYAK WITH THE HARDWARE INCLUDED WITH THE FACTORY MOUNTING PLATE. IN BETWEEN THE FACTORY SCREWS AND THE COMPLETED MOUNT, INSTALL THE OVERSIZED WASHERS. FURTHER VERTICAL ADJUSTMENT FOR CLEARANCE CAN BE ACHIEVED BY LOOSELY ATTACHING THE PLATE TO THE KAYAK AND SHIFTING IT UP OR DOWN DEPENDING ON NEED.



- 6) GO FISH.

VALID MOUNT CONFIGURATIONS



****PLEASE NOTE: SOME FIRST GENERATION TOPWATERS USE A THICKER PLATE THAN STANDARD REQUIRING THE USE OF A SHORTER, NOT INCLUDED, SCREW. ADDITIONALLY, PLATE FITMENT CAN VARY DUE TO THE CONSTRUCTION OF THE HULL ON ALL KAYAKS. IF YOU CANNOT FIT YOUR PLATE DUE TO THE SCREW HOLES NOT LINING UP, A DRILL BIT OR REAM CAN BE USED TO ENLARGE THE HOLES.**